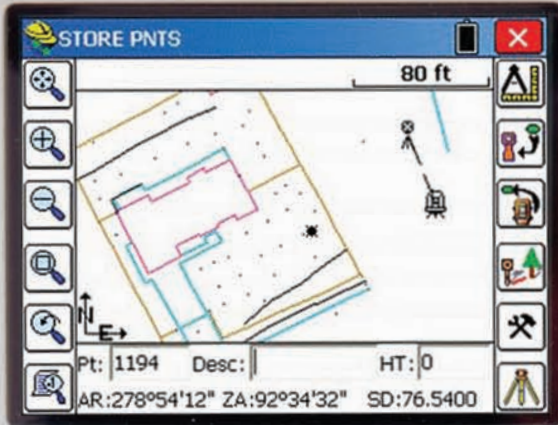


Carlson Surveyor+



The device features a full QWERTY keyboard with various function keys. The top row includes a 'TS' key, a minus key, a 'PgUp' key, and another minus key. The second row contains 'Esc', a circular trackball, and 'BkSp'. The third row has 'Tab', a 'PgDn' key, and 'ENTER'. The fourth row consists of numeric keys: 7 &, 8 @, and 9 #. The fifth row has 4 \$, 5 %, and 6 ^ keys. The sixth row has 1 !, 2 (, and 3) keys. The seventh row has -, 0 *, and . , keys. The eighth row has 'Alt', 'A +', 'B /', 'C =', and '2nd' keys. The ninth row has function keys: D F1, E F2, F F3, G F4, H F5, and I F6. The tenth row has J ~, K (, L), M [, N], and O * keys. The eleventh row has P ` , Q : , R ; , S ' , T " , and U * keys. The twelfth row has V < , W > , X ? , Y | , Z \ , and Del keys. The bottom row includes a Windows logo key, a Shift key, a spacebar, a Ctrl key, and a power button.

Surveyor – Surveyor+

*The speed you need...
The reliability you deserve*

The fastest, most durable and powerful handheld computer available today

**Powered with
Carlson SurvCE**

COMPLETELY RUGGEDIZED

IP67 water & dust resistant; magnesium housing – a full metal jacket!

MORE MEMORY

Up to 1 gigabyte with option to expand

COMPACT/CONVENIENT CONNECTIONS

2 styles of USB connections located on top for convenience

EASY TO HOLD/CONTROL

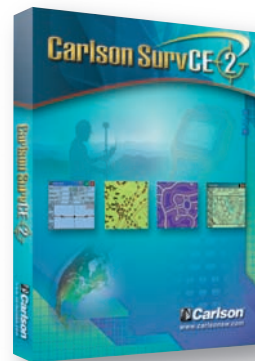
Just 2 pounds! Keys' size & location optimized for precise handling

BACK LIT CONTROL KEYS

Easily see when quick command keys are activated

LONGER BATTERY LIFE

8-10 hours standard with option to add second battery



Find Out More NOW!

Call or visit Carlson Software:
800-989-5028 • www.carlsonsw.com



Specifications

PROCESSOR

Type: PXA270
Maximum Clock Speed: 520 Mhz/Surveyor; 624 Mhz/Surveyor+
Both include:
• Real Time Clock
• Battery Warm Swapping Ability
• Microphone
• Speaker

DISPLAY

Type: TFT
Resolution (240x320 pixels): QVGA
Color/Mono: Color
Size: 3.5" diagonal
Both also include:
• Backlight (LCD)
• Touchscreen
• Ability to disable Touchscreen from keyboard

OPERATING SYSTEM — WM 6.1

Languages: English, Simplified Chinese, Portuguese, French, German, Spanish
Applications included: All standard WM6 applications (Word Mobile, Excel Mobile, Outlook Mobile, etc.)
Bluetooth Audio: A2DP supported
Speed Switch Utility: Sets processor clock speed to conserve battery

INTERFACE (I/O CONNECTOR)

RS-232 9 pin D: Two DB-9
Bluetooth: 2.0 w EDR
802.11 b/g: Yes for Surveyor+; No for Surveyor
USB Client: Mini-B connector
USB Host: Full-size USB connector

EXPANSION (Surveyor+ only)

MicroSD Card Slot
Expansion Packs for GPS, cell modem, Cirronet radio, Maxstream radio, Futaba radio

KEYBOARD

Type: Elastomer
Navigation: 9-way (9) navigation pad with center enter
Numeric Keys: 0-9 (10)
Alpha Keys: A-Z (26)
Command/Modifier Keys: 10 – Shift, Tab, Control, 2nd, Escape, Alt, Space, Backspace, Delete
Enter Key: Large, easy to use both right- and left-handed
Left & Right Soft
Function Key: Left Soft Function key loads SurvCE
Windows Key: Displays the Start Menu
Power Key
Backlit Control Keys: Alt-Yellow, 2nd-Blue, Control-Green, Shift-Red
LED Enunciators/
Notification: 2 – One LED displays charging status and the second one can be programmed by the application software
Number of keys: 52

MEMORY

Feature	Surveyor	Surveyor+
RAM	64 MB	128 MB
Data Storage	512 MB	1GB
Data Storage Expansion	No	MicroSD memory card behind 2nd battery

BATTERY

Battery Type: Lilon
Battery Packs: Come standard with one (1) battery pack; user can add a second battery pack
Battery Capacity: 3900 mAh (7800 mAh capacity reached when using two battery packs)
Battery Life: 8-10 hours standard (battery life is determined by the number of battery packs used, by the amount of time the backlight is on, the backlight brightness and the type of expansion pack installed)
Charging Plug: Included
Vehicle Charge Adapter: Optional
Warm Swapping: Included

ENVIRONMENTAL

Operating Temperature: -20C to +50C
Storage Temperature: -30C to +60C
Humidity: MIL-STD-810F (Designed to this standard)
Water Resistance: IP67
Shock Resistance: MILSTD 810F (Designed to withstand 5-foot drop onto concrete)
Dust Resistance: IP67

ENCLOSURE

Dimensions: 10.2" x 5" x 1.5"
Weight: ~ 2 lbs.
Both include:
• Handstrap
• Full-size Stylus
• Stylus Storage
• Tripod Hook
• Magnesium enclosure with elastomer end caps

WARRANTY

• Electronics: 24 months
• Battery: 6 months
• Accessories: 6 months

AVAILABLE ACCESSORIES

Wall Charger with choice of adapter
Styli
Screen Protectors
Battery Pack – Standard
Vehicle Charger
External Battery Charger

EXPANSION PACKS (For Surveyor+ only)

Spread Spectrum Radio – 900 Mhz
Spread Spectrum Radio – 2.4 Ghz
3G Cellular Modem – GSM

Carlson Surveyor

JOB: CARLSON SAMPLE

File | Equip | Survey | COGO | Road

1 Job	6 Data Transfer
2 Job Settings	7 Import/Export
3 Points	8 Delete Job
4 Raw Data	9 Write Note
5 Feature Code List	0 Exit

TS

Esc PgUp BkSp

Tab Home ENTER

Tab PgDn

7 & 8 @ 9 #

4 \$ 5 % 6 ^

1 ! 2 (3)

- 0 * .

Alt A + B / C = 2nd

D F1 E F2 F F3 G F4 H F5 I F6

J - K (L) M | N | O +

P < Q : R ; S ' T " U ~

V < W > X ? Y | Z \ Del

Windows Shift Ctrl Power